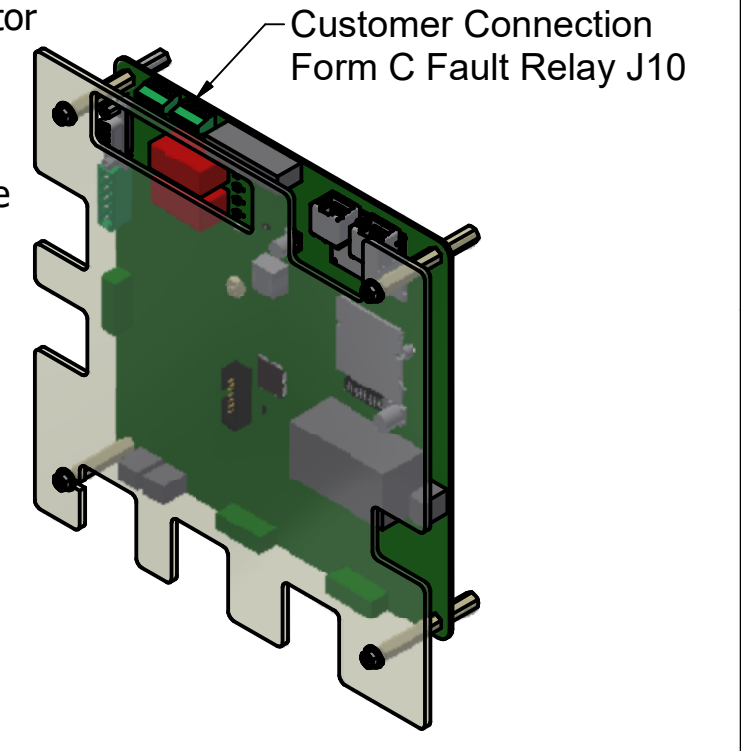
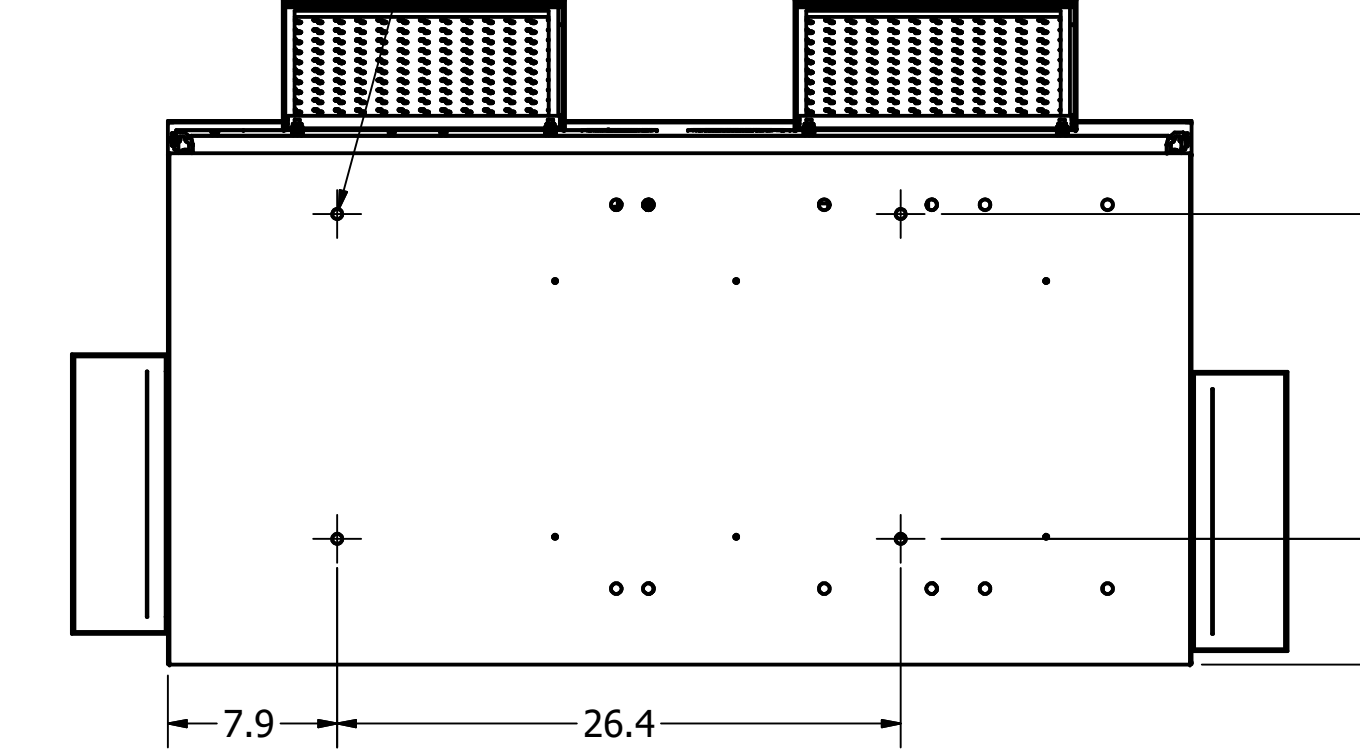
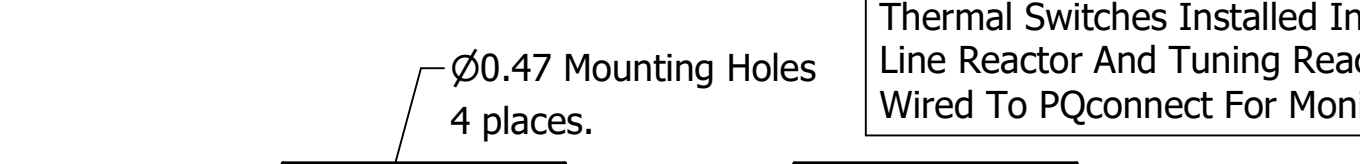
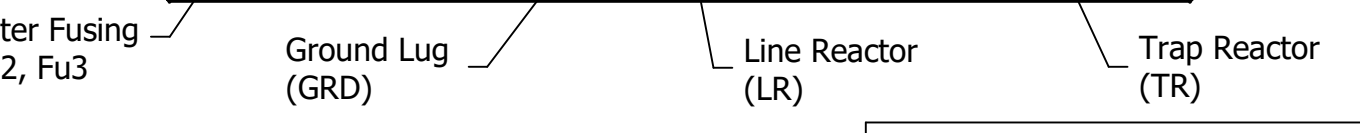
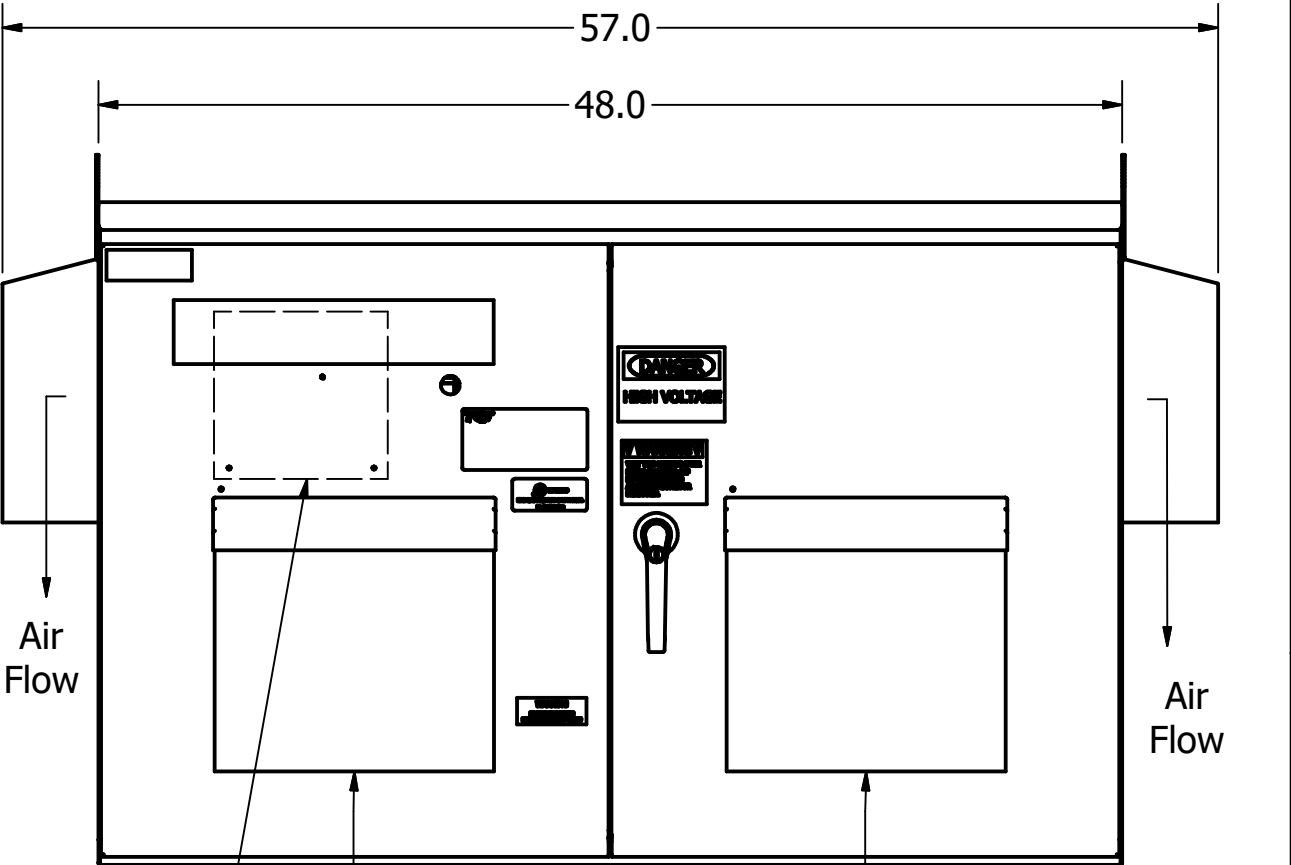
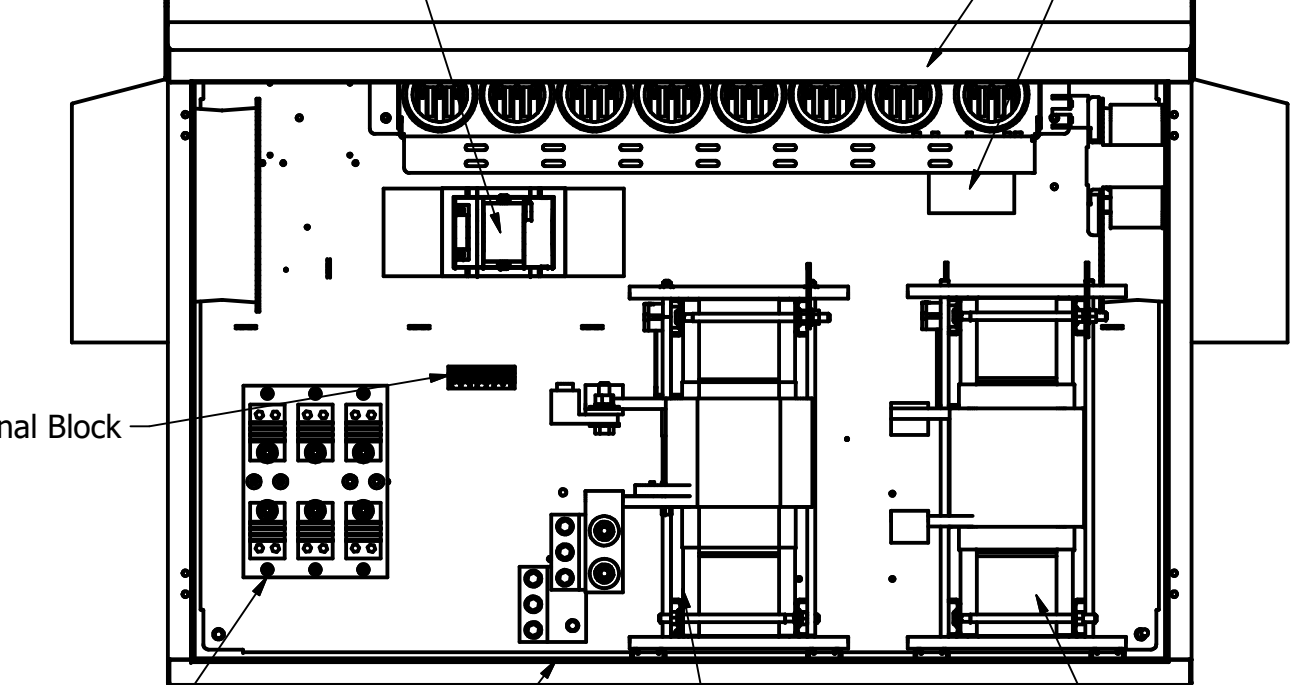
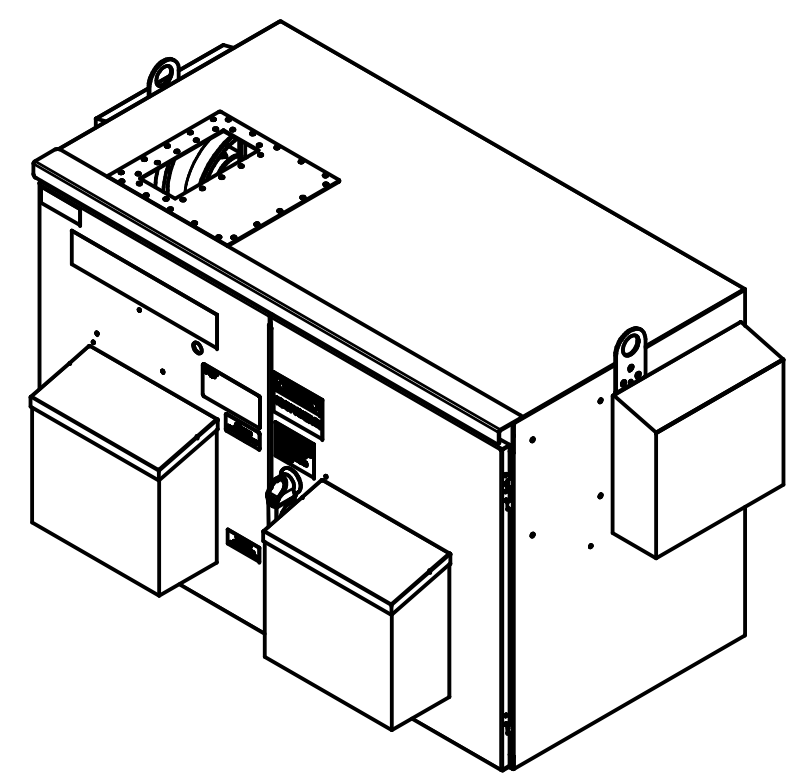
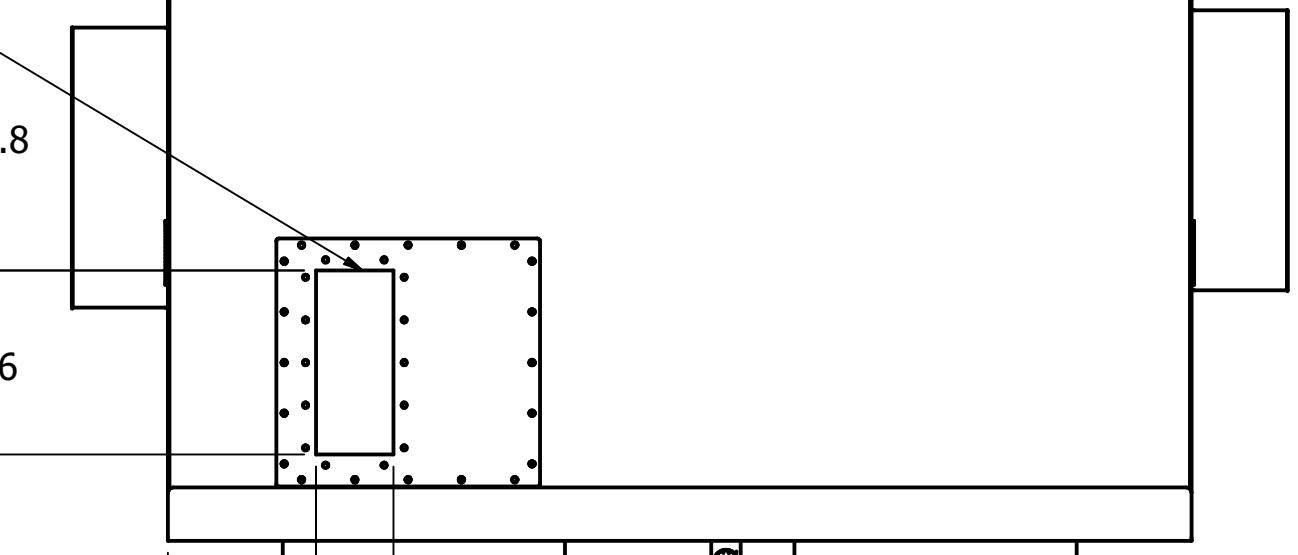


UNIT SPECIFICATIONS						
HP	VOLT	PHASE	HZ	HARMONIC	KVAR	AMPS
550	480	3	60	5TH	160	655

SCHEMATIC : 29597-PQ6
Top View

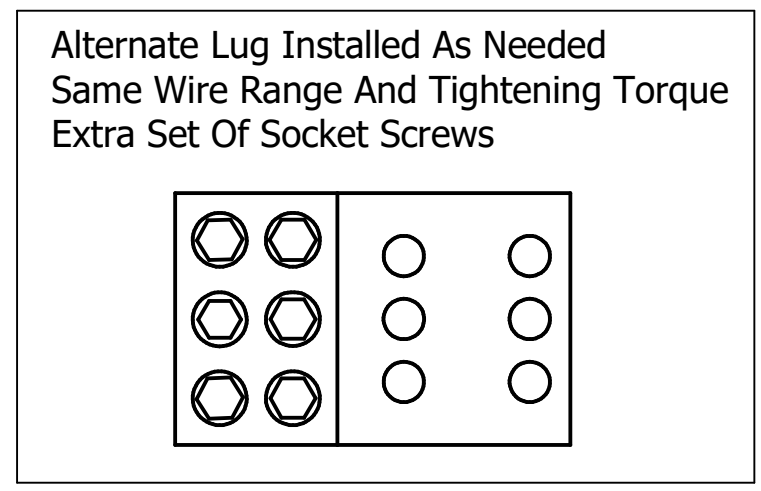



GROUND LUG:
WIRE RANGE - THREE 600MCM-2
TIGHTENING TORQUE 500 IN-LB.

L1 L2 L3 T1 T2 T3

CUSTOMER CONNECTIONS:
WIRE RANGE - THREE 600MCM-2
TIGHTENING TORQUE 500 IN-LB.

- Notes:
1. Customer is responsible for installation to meet all national and local electrical codes.
 2. Use only hubs or fittings that comply with UL514B for type 3R enclosures.
 3. Approx. WT LBS : 950
 4. Enclosure Color: RAL 7006 Beige Grey



THE INFORMATION AND DESIGNS CONTAINED IN THIS DRAWING ARE CONFIDENTIAL AND THE PROPRIETARY PROPERTY OF ALLIED MOTION TECHNOLOGIES INC. AND ITS SUBSIDIARIES. NEITHER THIS DESIGN NOR ANY INFORMATION CONTAINED IN THIS DRAWING MAY BE REPRODUCED OR DISCLOSED TO OTHERS WITHOUT THE EXPRESS WRITTEN CONSENT OF ALLIED MOTION TECHNOLOGIES INC. AND ITS SUBSIDIARIES.	I	6568 Update Enclosure	02/08/24	JRN	TOLERANCES (EXCEPT AS NOTED)	 TCI An Allied Motion Company W132N10611 Grant Drive Germantown, WI 53022 © 2024 TCI, LLC HarmonicGuard Passive 550HP, 480/3/60, Type 3R, JCI, PQconnect 107914DG
	H	5830 Update DB, Lugs	04/26/22	JRN	DECIMAL	
	G	5824-1 CNT Update, Temporary TR/Lugs	01/25/22	JRN	.XX ± .03 .XXX ± .010	
	F	5670 Updated Wire Range	07/27/21	JRN	FRACTIONAL ± 1/32	
	E	5404 Updated Enclosure	10/05/20	JRN	ANGULAR ± 1°	
D	5166 - Universal Wire Entry Plate Added	03/25/20	JRN		DRN BY: JRN DATE: 11/05/18 SCALE: 1/12 APRVD:	
NO	REVISION	DATE	BY		SIZE: C SHT. 1 OF 1	